

GRADUATE ATTRIBUTES

Where did they come from?
What are they for?



Original attributes

developed as part of Graduates for the 21st Century, QAA Scotland's Enhancement Theme

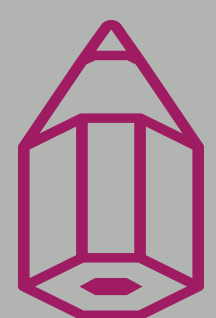
2010

Research commissioned



by the university identifies lack of clarity and gaps in coverage of original attributes

2013



Short life working group report

recommends revising the attributes and engaging in an extensive consultation process

2014



University establishes

steering group to take the consultation forward

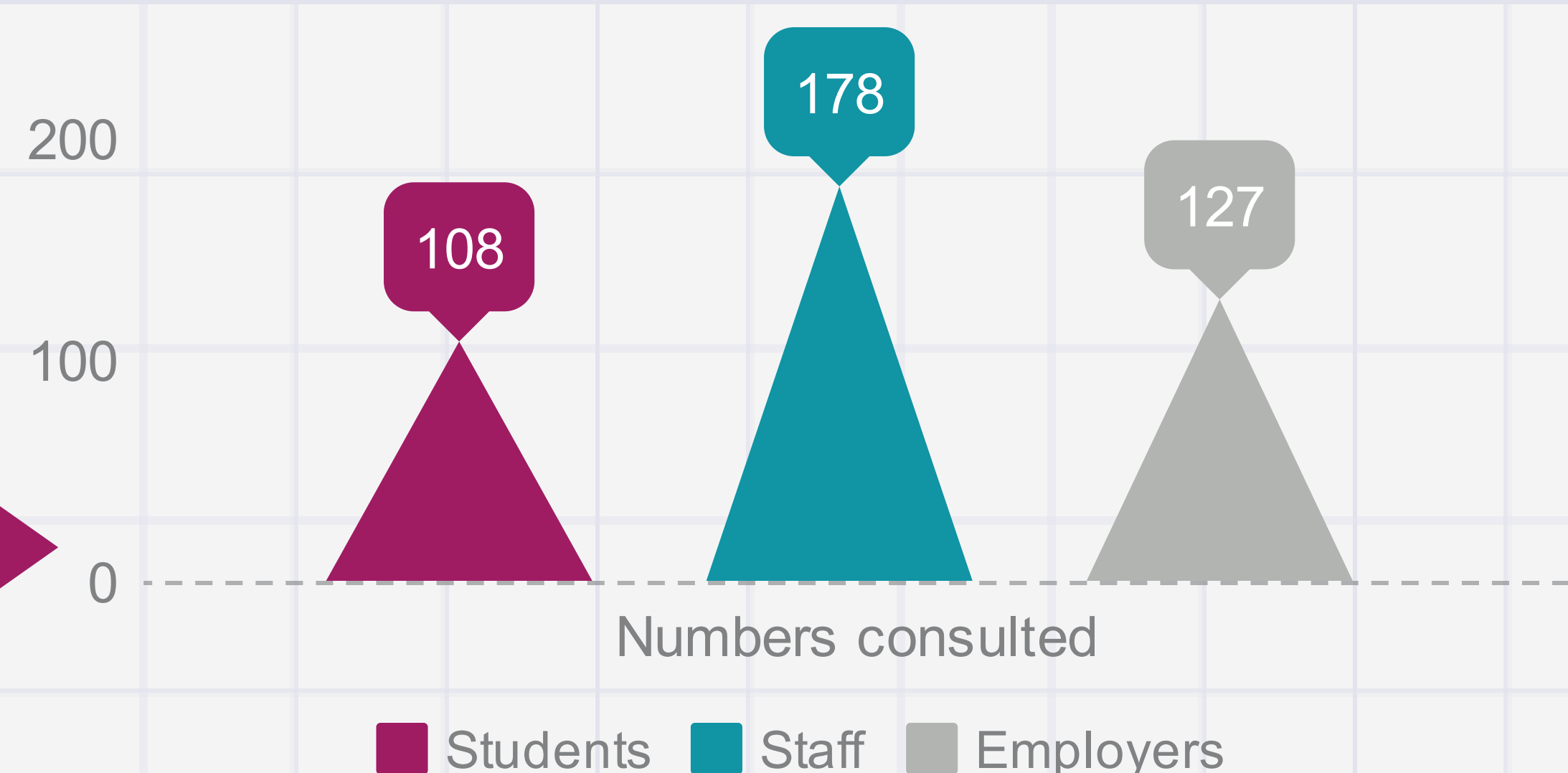
2016



Consultation exercise

with over 400 students, staff and employers

2017



Revised attributes

approved by the University's Quality Assurance and Enhancement Committee



2018

Key findings from consultation

- Importance of attributes to support conversations around skills.
- Aspirational- avoiding levelling and measurement
- Embracing and championing diversity and distinctiveness as individuals, and as an institution

YOUR

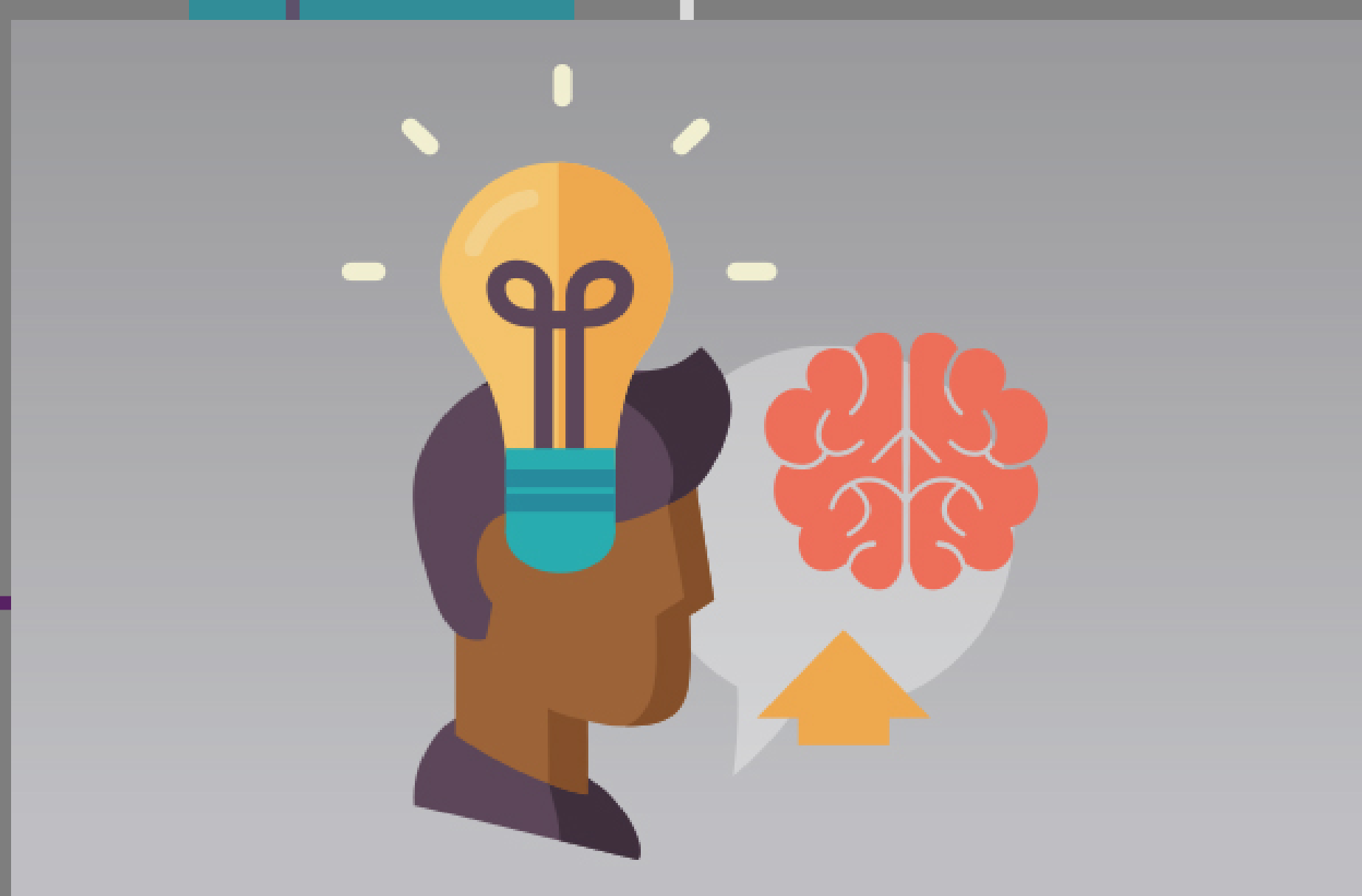
Graduate attributes



Academic skills



Communication



Self management



Social awareness



Interpersonal skills

2019 onwards

Graduate attributes as a focus for

- Reflection
- Dialogue
- Personal development planning

www.uhi.ac.uk/careers



Visit the university's
Careers and
Employability Centre

www.hisa.uhi.ac.uk



Find out about
HISA and how
they can
support you

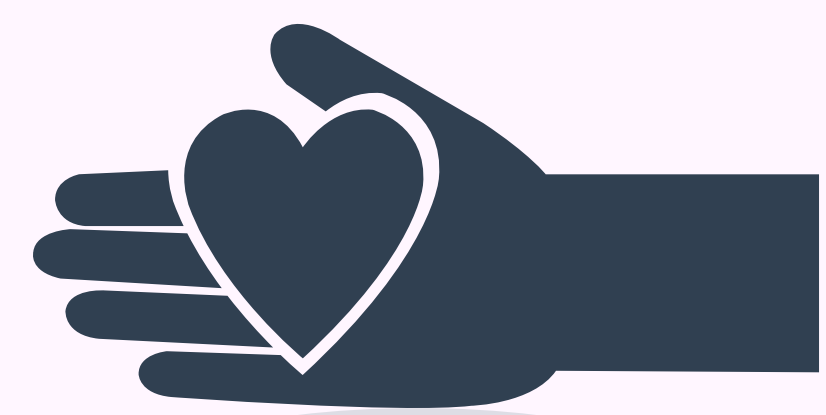
How can I use the graduate attributes?

Use GAs to frame
personal
development plans

induction.uhi.ac.uk



Consider what
skills you are
developing



Share how you are
promoting the
graduate attributes

www.uhi.ac.uk/graduateattributes